



BESPOKE CEDAR GARDEN ROOMS

HANDMADE IN WORCESTERSHIRE FOR OVER 45 YEARS



10 YEAR GUARANTEE WITH ALL OF OUR GARDEN ROOMS



Hanley	page 4 - 5
Hanley Plus	page 6 - 7
Hanley Heritage	page 8 - 9
Charford	page 10 - 11
Specifications	page 12 - 13
Technical Details	page 14 - 15

WELCOME TO THE MALVERN COLLECTION

AWARD WINNING HANDMADE QUALITY GARDEN BUILDINGS FOR OVER 45 YEARS

In the early 1970s, we started to design and produce garden buildings at our factory in Worcestershire. All of our buildings are made to order and handcrafted using traditional carpentry techniques by skilled craftsmen, which are then delivered and installed by our own teams of experienced fitters across the country.

BESPOKE CEDAR GARDEN ROOMS AND OFFICES A ROOM FOR ALL OCCASIONS

- Fully lined and insulated for all year round use
- Fully double glazed
- Fast efficient installation
- A valuable asset to your home
- Making the most of the space in your garden
- Individual bespoke design

Our buildings offer a wide range of stylish and practical solutions for your garden.

Move your office or hobby out of the house and into a fresh new environment. Our buildings create the perfect place for working from home or for your leisure activity by creating an inspirational room in your garden.

Our Garden Rooms and Offices are manufactured using Western Red Cedar. Western Red Cedar is a contemporary yet classic building material offering beauty, versatility and durability.

The buildings shown are only a guide to what we can achieve. Each building we make is designed to your exact individual requirements. If the size or design you require is not shown in our brochure then please contact us to discuss your specific ideas and plans.

At Malvern, we use only the highest quality materials from sustainable sources. Our cedar buildings are constructed using Canadian Western Red kiln dried cedar.

We strongly recommend that you visit one of our display sites, where you can examine for yourself the quality, design and materials used in the manufacture of our buildings. Experienced staff will be on hand to discuss your individual requirements.

Thank you for taking the time to look through our brochure.



STANDARD FEATURES

- Western Red Cedar doors and windows
- Glass to ground glazing to front
- One glass to ground window in each side
- Two privacy style vent windows to rear
- Double doors
- Double glazed throughout
- EPDM rubber roof (Flat roof only)
- Bitumen felt tiles (Apex or Hipped only)
- Guttering to rear (Flat roof only)
- Fully insulated
- 19mm heavy duty floor
- Colour paint finish

OPTIONS

- Laminate flooring
- Tinted glass
- Cedar shingle roof (Apex or Hipped only)
- Slate effect tiled roof (Apex or Hipped only)
- Guttering (Apex or Hipped)
- Extra glass to ground windows
- Extra privacy windows
- Additional doors
- Internal partitions
- Internal doors



THE HANLEY

Size w x d	Flat or Apex Roof	Hipped Roof	Pressure Treated Cedar Shingle Roof		Slate Effect Tiled Roof		Laminate Flooring	Tinted Glass
			Apex	Hipped	Apex	Hipped		
10' x 8'	16,920	18,405	1,075	1,640	1,110	1,695	760	475
12' x 8'	19,165	20,840	1,300	1,985	1,340	2,045	910	510
14' x 8'	21,485	23,365	1,515	2,315	1,565	2,390	1,060	560
16' x 8'	23,800	25,885	1,745	2,665	1,800	2,750	1,215	615
18' x 8'	26,305	28,575	1,930	2,950	1,990	3,040	1,365	660
12' x 10'	23,365	25,445	1,500	2,290	1,550	2,370	1,140	510
14' x 10'	26,150	28,470	1,755	2,680	1,810	2,765	1,335	560
16' x 10'	28,850	31,425	1,995	3,045	2,060	3,145	1,520	615
18' x 10'	31,625	34,440	2,150	3,285	2,220	3,390	1,715	660
20' x 10'	34,400	37,450	2,490	3,805	2,570	3,925	1,895	740
22' x 10'	37,175	40,470	2,735	4,180	2,820	4,310	2,080	825
24' x 10'	39,950	43,485	2,970	4,535	3,065	4,680	2,270	905
14' x 12'	29,685	32,360	1,975	3,015	2,040	3,115	1,595	560
16' x 12'	32,760	35,710	2,260	3,450	2,335	3,565	1,820	615
18' x 12'	35,825	39,045	2,565	3,920	2,645	4,040	2,045	660
20' x 12'	38,925	42,435	2,850	4,355	2,940	4,490	2,270	740
22' x 12'	41,975	45,740	3,235	4,940	3,340	5,100	2,505	825
24' x 12'	45,120	49,055	3,525	5,385	3,640	5,560	2,740	905
16' x 14'	36,730	n/a	2,785	n/a	2,875	n/a	2,120	615
18' x 14'	40,175	n/a	3,135	n/a	3,235	n/a	2,370	660
20' x 14'	43,620	n/a	3,485	n/a	3,595	n/a	2,655	740
22' x 14'	47,060	n/a	3,835	n/a	3,960	n/a	2,925	825
18' x 16' *	44,000	n/a	3,555	n/a	3,670	n/a	2,725	660
20' x 16' *	47,680	n/a	3,950	n/a	4,075	n/a	3,035	740

* Apex Only

OPTIONAL UPGRADES AVAILABLE ON THE HANLEY

Small glass to ground fixed window	Medium glass to ground fixed window	Large glass to ground fixed window	Privacy vent window	Single door	Double doors	Solid/half glazed internal door	Guttering (including downpipe per ft run) Fitted to rear of Pent and Flat as standard
470	595	720	560	895	1,645	495	15



STANDARD FEATURES

- Powder coated aluminium doors and windows
- Glass to ground glazing to front
- One glass to ground window in each side
- Two aluminium privacy style vent windows to rear
- Double doors
- Double glazed throughout
- EPDM rubber roof (Flat roof only)
- Bitumen felt tiles (Apex or Hipped only)
- Guttering to rear (Flat roof only)
- Fully insulated
- 19mm heavy duty floor
- Colour paint finish

OPTIONS

- Laminate flooring
- Tinted glass
- Cedar shingle roof (Apex or Hipped only)
- Slate effect tiled roof (Apex or Hipped only)
- Guttering (Apex or Hipped)
- Extra glass to ground windows
- Extra privacy windows
- Additional doors
- Internal partitions
- Internal doors



THE HANLEY PLUS

Size w x d	Flat or Apex Roof	Hipped Roof	Pressure Treated Cedar Shingle Roof		Slate Effect Tiled Roof		Laminate Flooring	Tinted Glass
			Apex	Hipped	Apex	Hipped		
10' x 8'	22,720	24,410	1,075	1,640	1,110	1,695	760	475
12' x 8'	25,270	26,905	1,300	1,985	1,340	2,045	910	510
14' x 8'	27,695	29,575	1,515	2,315	1,565	2,390	1,060	560
16' x 8'	29,905	32,200	1,745	2,665	1,800	2,750	1,215	615
18' x 8'	32,720	34,995	1,930	2,950	1,990	3,040	1,365	660
12' x 10'	29,470	31,550	1,500	2,290	1,550	2,370	1,140	510
14' x 10'	32,360	34,680	1,755	2,680	1,810	2,765	1,335	560
16' x 10'	35,165	37,735	1,995	3,045	2,060	3,145	1,520	615
18' x 10'	38,040	40,855	2,150	3,285	2,220	3,390	1,715	660
20' x 10'	41,020	44,075	2,490	3,805	2,570	3,925	1,895	740
22' x 10'	44,110	47,405	2,735	4,180	2,820	4,310	2,080	825
24' x 10'	47,195	50,730	2,970	4,535	3,065	4,680	2,270	905
14' x 12'	35,895	38,570	1,975	3,015	2,040	3,115	1,595	560
16' x 12'	38,865	41,920	2,260	3,450	2,335	3,565	1,820	615
18' x 12'	42,245	45,460	2,565	3,920	2,645	4,040	2,045	660
20' x 12'	45,550	49,060	2,850	4,355	2,940	4,490	2,270	740
22' x 12'	48,910	52,675	3,235	4,940	3,340	5,100	2,505	825
24' x 12'	52,365	56,300	3,525	5,385	3,640	5,560	2,740	905
16' x 14'	43,045	n/a	2,785	n/a	2,875	n/a	2,120	615
18' x 14'	46,590	n/a	3,135	n/a	3,235	n/a	2,370	660
20' x 14'	50,245	n/a	3,485	n/a	3,595	n/a	2,655	740
22' x 14'	53,995	n/a	3,835	n/a	3,960	n/a	2,925	825
18' x 16' *	50,610	n/a	3,555	n/a	3,670	n/a	2,725	660
20' x 16' *	54,835	n/a	3,950	n/a	4,075	n/a	3,035	740

* Apex Only

OPTIONAL UPGRADES AVAILABLE ON THE HANLEY PLUS

1000mm glass to ground fixed window	Privacy vent window	Exterior Aluminium single door 900mm	Exterior Aluminium double door 1600mm	Roof Velux (Apex and Hipped only)	Internal wall partitions (per ft run)	Guttering (including downpipe per ft run) Fitted to rear of Pent and Flat as standard
1,225	1,435	2,840	5,480	1,015	110	15



STANDARD FEATURES

- Heritage style powder coated aluminium doors and windows
- Full Heritage style glazing to front
- One full window in each side
- Two aluminium privacy style vent windows to rear
- Double doors
- Double glazed throughout
- EPDM rubber roof (Flat roof only)
- Bitumen felt tiles (Apex or Hipped only)
- Guttering to rear (Flat roof only)
- Fully insulated
- 19mm heavy duty floor
- Colour paint finish

OPTIONS

- Laminate flooring
- Tinted glass
- Cedar shingle roof (Apex or Hipped only)
- Slate effect tiled roof (Apex or Hipped only)
- Guttering (Apex or Hipped)
- Extra glass to ground windows (prices on request)
- Extra privacy windows
- Additional doors (prices on request)
- Internal partitions
- Internal doors



THE HANLEY HERITAGE

Size w x d	Flat or Apex Roof	Hipped Roof	Pressure Treated Cedar Shingle Roof		Slate Effect Tiled Roof		Laminate Flooring	Tinted Glass
			Apex	Hipped	Apex	Hipped		
10' x 8'	24,165	25,650	1,075	1,640	1,110	1,695	760	475
12' x 8'	27,235	28,915	1,300	1,985	1,340	2,045	910	510
14' x 8'	30,390	32,265	1,515	2,315	1,565	2,390	1,060	560
16' x 8'	33,115	35,200	1,745	2,665	1,800	2,750	1,215	615
18' x 8'	36,450	38,720	1,930	2,950	1,990	3,040	1,365	660
12' x 10'	31,440	33,520	1,500	2,290	1,550	2,370	1,140	510
14' x 10'	35,050	37,370	1,755	2,680	1,810	2,765	1,335	560
16' x 10'	38,165	40,740	1,995	3,045	2,060	3,145	1,520	615
18' x 10'	41,765	44,585	2,150	3,285	2,220	3,390	1,715	660
20' x 10'	45,265	48,320	2,490	3,805	2,570	3,925	1,895	740
22' x 10'	48,875	52,165	2,735	4,180	2,820	4,310	2,080	825
24' x 10'	52,370	55,905	2,970	4,535	3,065	4,680	2,270	905
14' x 12'	38,585	41,260	1,975	3,015	2,040	3,115	1,595	560
16' x 12'	42,075	45,025	2,260	3,450	2,335	3,565	1,820	615
18' x 12'	45,970	49,190	2,565	3,920	2,645	4,040	2,045	660
20' x 12'	49,795	53,305	2,850	4,355	2,940	4,490	2,270	740
22' x 12'	53,670	57,435	3,235	4,940	3,340	5,100	2,505	825
24' x 12'	57,540	61,475	3,525	5,385	3,640	5,560	2,740	905
16' x 14'	46,045	n/a	2,785	n/a	2,875	n/a	2,120	615
18' x 14'	50,315	n/a	3,135	n/a	3,235	n/a	2,370	660
20' x 14'	54,490	n/a	3,485	n/a	3,595	n/a	2,655	740
22' x 14'	58,755	n/a	3,835	n/a	3,960	n/a	2,925	825
18' x 16' *	54,140	n/a	3,555	n/a	3,670	n/a	2,725	660
20' x 16' *	58,550	n/a	3,950	n/a	4,075	n/a	3,035	740

* Apex Only



STANDARD FEATURES

- Aluminium powder coated doors and windows
- Bi-folding or sliding doors
- Glass to ground glazing to front
- One aluminium glass to ground window in each side
- Two aluminium privacy style vent windows to rear
- Double glazed throughout
- Steel framed floor
- Steel corner front posts
- Steel lintel across the front
- EPDM rubber roof
- Guttering to rear
- Aluminium fascia boards and soffits
- Fully insulated
- Colour paint finish

OPTIONS

- Laminate flooring
- Tinted glass
- Extra glass to ground windows (prices on request)
- Extra privacy windows
- Additional doors (prices on request)
- Internal partitions
- Internal doors



THE CHARFORD

Size w x d	Flat Roof	Laminate Flooring	Tinted Glass
10' x 8'	27,325	760	475
12' x 8'	30,775	910	510
14' x 8'	33,425	1,060	560
16' x 8'	36,640	1,215	615
18' x 8'	40,590	1,365	660
12' x 10'	34,005	1,140	510
14' x 10'	37,510	1,335	560
16' x 10'	40,470	1,520	615
18' x 10'	44,690	1,715	660
20' x 10'	47,845	1,895	740
22' x 10'	52,295	2,080	825
24' x 10'	56,040	2,270	905
14' x 12'	40,610	1,595	560
16' x 12'	45,100	1,820	615
18' x 12'	49,635	2,045	660
20' x 12'	53,245	2,270	740
22' x 12'	57,530	2,505	825
24' x 12'	61,700	2,740	905
16' x 14'	49,405	2,120	615
18' x 14'	53,985	2,370	660
20' x 14'	57,900	2,655	740
22' x 14'	62,815	2,925	825

HANLEY, HANLEY PLUS & HERITAGE TECHNICAL SPECIFICATION

WALL CONSTRUCTION

Western Red Cedar timber is used to clad to the external walls of the garden room. The timber clad walls are then lined with a breather paper membrane. Scandinavian redwood is used for the internal frame construction. The cavity walls are insulated using 50mm foil backed insulation board. Internally, the walls are lined with 9mm prepainted patterned MDF.

FLOOR

19mm redwood tongue and groove boards fixed to 44mm x 69mm pressure treated redwood joists with a breathable paper membrane sandwiched between. The floors are sprayed with a high quality timber preservative. Techniboard insulation is laid on top of the internal floor.

ROOF

Scandinavian redwood is used for our roof framework construction. 15mm external grade plyboard is used on our flat roof models which are then covered by an EPDM rubber roof system. On the apex and hipped roof models, heavy duty bitumen roof tiles are laid onto 12mm redwood tongue and groove boards.

Cedar shingles can be used as an optional upgrade on the apex and hipped models. A breathable paper membrane is fixed between the roof boards and the redwood joists on all models. Our roof sections are sprayed with a high quality timber preservative prior to leaving the factory. 50mm foil backed insulation fills the cavity between the joists and 9mm prepainted patterned MDF lining. Guttering is fitted to the rear on a flat roof model as standard and as an option on the apex and hipped models.

EXTERNAL FINISH

A comprehensive paint system is applied prior to the building leaving the factory to protect and decorate your building. The paint system comprises of an initial undercoat and a further two top coats of your chosen colour. A wide selection of colours are available to suit.

HANLEY DOORS & WINDOWS

All Hanley windows and doors are made from Western Red Cedar and fitted with double glazed units using 4mm toughened glass with Planitherm heat loss coating as standard. All opening windows are fitted with a lockable key catch. All doors are fitted with a 5 lever mortice lock and brass/chrome handles.

HANLEY PLUS DOORS & WINDOWS

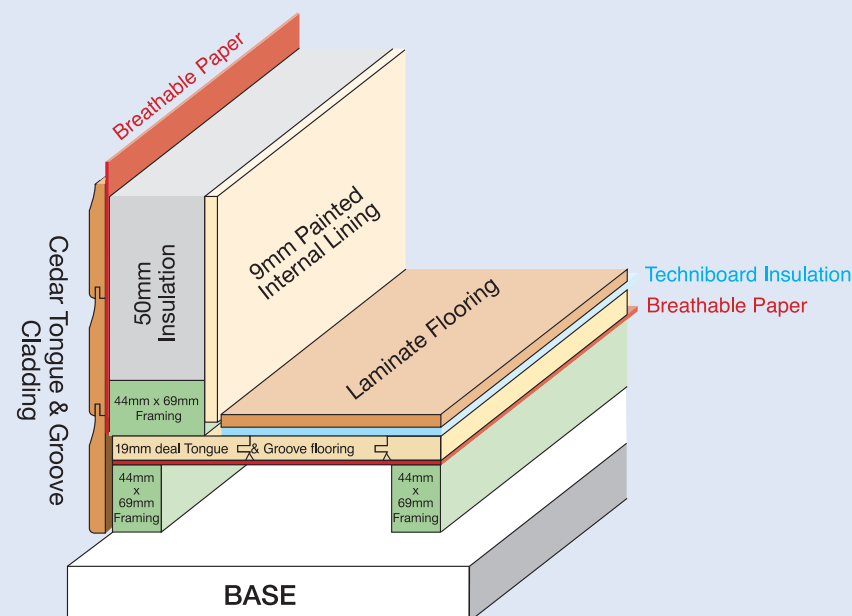
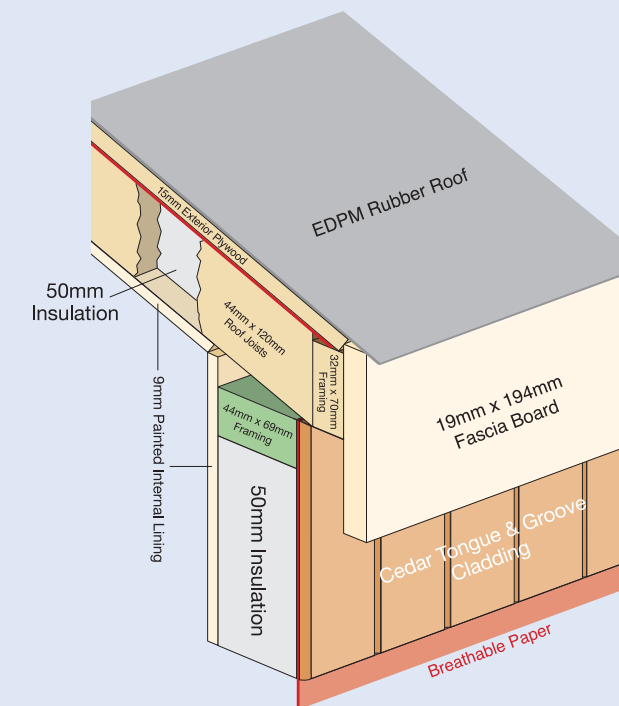
All Hanley Plus windows and doors are made from powder coated aluminium and fitted with double glazed units using 4mm toughened glass with Planitherm heat loss coating as standard.

INTEGRAL BLINDS

The integral blind system is available as an optional upgrade (excluding Hanley Heritage) and is a great alternative to curtains or fitted blinds. The integral blinds are fitted within the sealed double glazed units and are operated by a magnetic control. These are available in a choice of colours.

GUARANTEE

All Malvern Garden Rooms come with a 10 year timber guarantee against rot and decay. Aluminium doors and windows come with a 10 year guarantee. All other workmanship and materials are guaranteed for a twelve month period from date of installation.



CHARFORD TECHNICAL SPECIFICATION

WALL CONSTRUCTION

Two steel front corner posts and window support posts are manufactured using zinc primed hot rolled steel to carry galvanised lintels (see picture opposite). We believe this steel frame construction is essential when fitting sliding or bi-folding doors and provides strength and rigidity that these type of doors systems require. Western Red Cedar timber is used to clad to the external walls of the garden room. The timber clad walls are then lined with a breather paper membrane. Scandinavian redwood is used for the internal frame construction. The cavity walls are then insulated using 50mm foil backed insulation board. Internally, the walls are lined with 9mm prepainted patterned MDF.

FLOOR

Steel framing cold rolled galvanised 'C' section is used for the complete base structure with a neoprene seal adhered to the steel to provide a thermal break. 12mm plyboard is then fixed over the steel base structure and 25mm foil backed insulation laid on top. Another layer of 12mm ply is then placed over the insulation board. If the optional laminate is then required, a further techniboard underlay is placed over the top of the plyboard and finally covered by the laminate flooring.

ROOF

An EDPM rubber roof for longevity covers a 15mm plyboard roof fixed to 44mm x 120mm Scandinavian redwood framework. The cavity is filled with 50mm foil backed insulation and the internal then lined with a 9mm prepainted patterned MDF.

EXTERNAL FINISH

A comprehensive paint system is applied prior to the building leaving the factory to protect and decorate your building. The paint system comprises of an initial undercoat and top coats of your chosen colour. A wide selection of colours are available to suit.

CHARFORD DOORS & WINDOWS

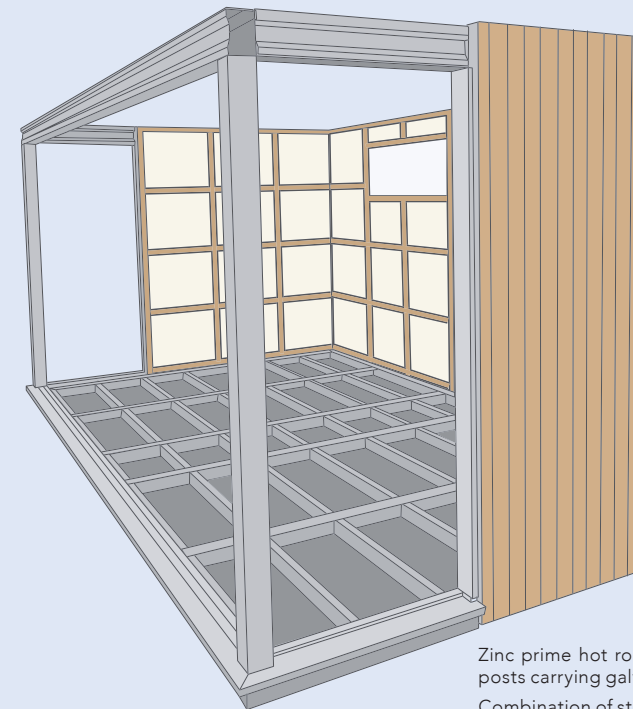
All Charford windows and doors are made from powder coated aluminium and fitted with double glazed units using 4mm toughened glass with Planitherm heat loss coating as standard. The Charford comes with either aluminium bi-folding or sliding style doors.

INTEGRAL BLINDS

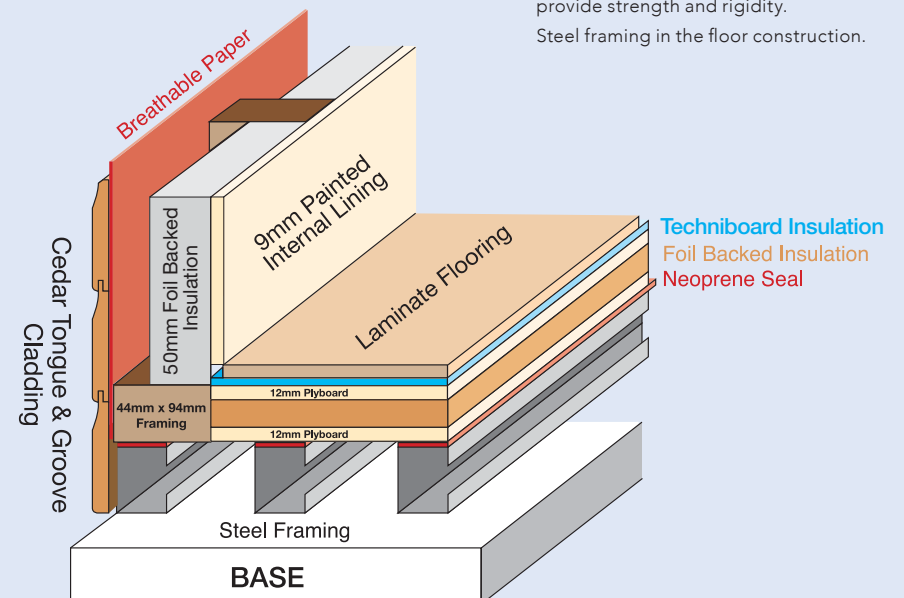
The integral blind system is available as an optional upgrade and is a great alternative to curtains or fitted blinds. The integral blinds are fitted within the sealed double glazed units and are operated by a magnetic control. These are available in a choice of colours.

GUARANTEE

All Malvern Garden Rooms come with a 10 year timber guarantee against rot and decay. Aluminium doors and windows come with a 10 year guarantee. All other workmanship and materials are guaranteed for a twelve month period from date of installation.



Zinc prime hot rolled steel front corner posts carrying galvanised lintels.
Combination of steel posts and lintels to provide strength and rigidity.
Steel framing in the floor construction.



FEATURES & OPTIONS

COLOUR PAINT FINISH

A comprehensive paint system is applied prior to the building leaving the factory. The paint system comprises of an initial undercoat and a further two top coats of your chosen colour.

DOUBLE GLAZING

All double glazing units use 4mm toughened glass with Planitherm heat loss coating as standard.

TINTED GLASS

All glazing has one side with an anti-sun tint applied to the unit.

INTEGRAL BLINDS

Blinds within the double glazed unit available in a choice of colours.

EPDM RUBBER ROOF

A maintenance free synthetic rubber membrane covering the roof.

BITUMEN FELT TILES

Roof is covered with tile effect heavy duty felt tiles on the apex and hipped roof models in a choice of three colours.

CEDAR SHINGLE ROOF

Western Red cedar shingles fixed to pressure treated joists to enhance the appearance of your building and provide added protection to the roofing felt beneath, apex and hipped roof models.

SLATE EFFECT ROOF TILE

Slate effect roof tile is a synthetic roof tile which emulates the appearance of natural slates and has a long life span with no maintenance.

MDF

Walls are lined with 9mm pre-painted patterned MDF.

INSULATION

50mm foil back insulation.

GUTTERING

Guttering is available in a choice of three colours.

LAMINATE

Premium hard wearing laminate flooring with a wide range of styles to choose from.

LOCKING SYSTEMS

The Hanley and Hanley Heritage are fitted with a 5 lever lock and lockable privacy windows. The Hanley has chrome fittings (brass available on request) and the Hanley Heritage has black as standard. The Hanley Plus and Charford are fitted with 'Ultion' security locking system as standard, lockable privacy windows and a choice of fitting colour finishes are available.

All prices are in (£) Pound Sterling

BUILDING DIMENSIONS

Charford heights	Depth	Front	Rear
	8' (2.44m)	2.49m	2.49m
	10' (3.05m)	2.49m	2.49m
	12' (3.66m)	2.49m	2.49m
	14' (4.27m)	2.49m	2.49m

Hipped heights	Depth	Ridge	Rear
	8' (2.44m)	3.07m	2.40m
	10' (3.05m)	3.26m	2.40m
	12' (3.66m)	3.45m	2.40m

Apex heights	Depth	Ridge	Eaves
	8' (2.44m)	3.07m	2.40m
	10' (3.05m)	3.26m	2.40m
	12' (3.66m)	3.45m	2.40m
	14' (4.27m)	3.24m	2.40m
	16' (4.88m)	3.26m	2.40m

Flat heights	Depth	Ridge	Eaves
	8' (2.44m)	2.49m	2.49m
	10' (3.05m)	2.49m	2.49m
	12' (3.66m)	2.49m	2.49m
	14' (4.27m)	2.49m	2.49m

FLOOR SIZE CONVERSION CHART

Imperial (ft)	Metric (m)
10' x 8'	3.05 x 2.44
12' x 8'	3.66 x 2.44
14' x 8'	4.27 x 2.44
16' x 8'	4.88 x 2.44
18' x 8'	5.49 x 2.44
20' x 8'	6.10 x 2.44
12' x 10'	3.66 x 3.05
14' x 10'	4.27 x 3.05
16' x 10'	4.88 x 3.05
18' x 10'	5.49 x 3.05
20' x 10'	6.10 x 3.05
22' x 10'	6.71 x 3.05
24' x 10'	7.32 x 3.05
14' x 12'	4.27 x 3.66
16' x 12'	4.88 x 3.66
18' x 12'	5.49 x 3.66
20' x 12'	6.10 x 3.66
22' x 12'	6.71 x 3.66
24' x 12'	7.32 x 3.66
16' x 14'	4.88 x 4.27
18' x 14'	5.49 x 4.27
20' x 14'	6.10 x 4.27
22' x 14'	6.71 x 4.27
20' x 14'	6.10 x 4.27
18' x 16'	5.49 x 4.88
20' x 16'	6.10 x 4.88

IMPORTANT POINTS TO NOTE

All of our Cedar Garden Rooms come with a ten year guarantee against rot and decay. All other workmanship and materials are guaranteed to be free from defects and faulty installation for a period of 12 months. All of our guarantees are subject to the buildings being maintained in line with our recommendations.

We would like to remind customers that timber is an organic product, subject to naturally occurring changes that result from different environmental conditions i.e. changes in colour, surface splits and shrinkage. We cannot accept responsibility for these natural changes.

All base work is the responsibility of the customer, as is the safe securing of the building once installed. We require a level solid base, either paving slabs, decking or concrete upon which to install your building. In the event of a base failure, it is the customers responsibility to accept delivery of the building and store appropriately.

Please allow as much room as possible around the building for our fitters to work during installation, a minimum of 18". If this is not possible please contact the office to discuss.

Our installers will need clear access to carry building sections from the vehicle to your prepared base, with no height restrictions or tight, sharp corners to negotiate.

Our installers cannot lift sections over 4' in height or over buildings such as garages. If the only access is through the house, a straight run is required and many sections will not pass through doorways. Please advise us in advance if there are any difficulties regarding access.

Always make allowance for any roof overhang when buildings have to go into confined spaces.

All building dimensions shown in this brochure are approximate, based on floor sizes.

All timber used in the construction of our buildings originates from sustainable forests.

As it is our policy to continually improve products, methods and materials, we reserve the right to change specifications from time to time, we will not make any significant variations without your agreement.

COLOURS AVAILABLE



Stone Green



Cornsilk



Dark Olive



Malvern Green



Olive Grey



Vintage White



Gypsy Green



Rush Green



Fern Green



Honey Dew



Mustard



Reflections



Dove Grey



Soft White



Ruddy Red



Ocean Blue



Urban Grey



White Smoke



Schoolhouse Ink



Squid Ink



Pebble



Fleet Grey



Graphite Grey



Green Black

The swatches above are for illustration purposes only as the printing process may not allow an accurate colour representation of paint or stain based finishes. We advise when selecting a final colour choice to request a painted timber sample prior to doing so.

OTHER RANGES AVAILABLE...



Traditional Summerhouses



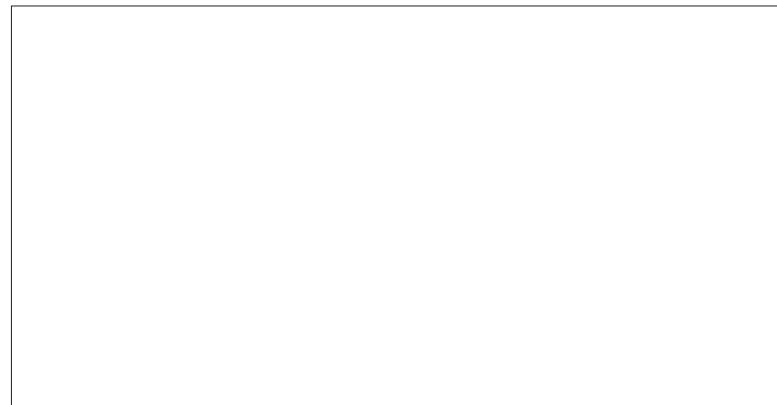
Garden Studios



Sheds, Workshops and Playhouses



Cottage Range of Cedar Buildings



QUALITY GARDEN BUILDINGS

Manufactured and installed by The Malvern Collection Limited. All prices include delivery (mainland England & Wales) and VAT.

As it is our policy to continually improve products, methods and materials, we reserve the right to change specifications from time to time. We will not make any significant variations without your agreement. Please note photos are for illustration purposes only and are not always standard specification. All building sizes are approximate and for guidelines only. All timber measurements, if stated, are finished sizes only i.e. after machining. Please note that finished sizes can vary by plus or minus 1mm.